

## TECHNICAL SPECIFICATIONS

Dimensions	95mm×55mm×13mm (L×W×D)
Weight	Approx.100g
Display	3.0 inches 16:9 260K true color TFT screen
Transfer rate	Read>650Kbps, Write>600Kbps
USB port	USB 2.0 full speed
Power supply	Built-in lithium battery, 800 mAh. 4 hours after full charge, 6 hours in the screen protection state.
EMS Memory	2Gb. External card support: 128/256/512MB/1GB/2GB (not included)
Record	Recording format: WAV
MP3&WMA&WAV	
Supported compression rate	32Kbps - 320Kbps
Frequency response	20HZ-20KHZ
Degree of distortion	<0.1%
SNR	>80dB
Signal separate	>80dB
Standard audio output	Approx. 5MW+5MW(32Ω)
CMOS-camera	
Definition□pixels□	2.0 Mega
Color digit	24
Zoom method/range	4-time digital zooming/0.6M. limitless
Effects	7 modes
Recording format	AVI, ASF
Photo format	JPEG
Video format	AVI, ASF
Video definition	640x480
Frame/Frequency	30fps
Video output level	1.0 VPP
FLASH format	FLASH2.1 support
Music format	MP3/WMA/WAV
Picture format	JPEG
Ambient temperature	0 °C... +40 °C
Languages	English, French, Italian, Spanish, German, Dutch, Russian, Chinese, Czech.

## PRECAUTIONS

Thank you for purchasing our product. Please read the following precautions carefully before using it:

- Do not use the player in extremely hot, cold, dusty, damp and dry environments.
- Keep the product out of the reach of children - this will help avoid any possible damage by touching and falling down.
- Do avoid using the device in the extremely dry places to prevent the static.
- Do not keep the product under direct sunshine (such as vehicle, in an open and clear area, or on the beach).  
Do not rub or impact the product with hard objects, otherwise, the surface of the product might be rubbed out or other hardware inside might be damaged.
- Please charge the battery in the cases as follow:
  - The battery icon displays empty;
  - The system automatically turns off several times or can not be turned on after restarting the device.

- Please turn off the device if you want to pull in/out the miniSD card for the current in pulling in/out SD card is very big which would damage the device.
- For the MPR can be charged by the charger only, please take care of the charger.
- Do not disconnect it abruptly during formatting and uploading or downloading, otherwise error may occur to the program or the file may be lost.
- Please access the document in the right way when the player is used as an HDD. The user is advised to backup important documents. The producer shall not be responsible for the document loss caused by misoperation.
- When downloading video, picture or music files, please save the file according the provisions in the section of Enter Working Mode of U Disk, or the file might fail to play.
- Do not replace the battery by yourself.
- Do not use the product when you are driving or you have to integrate your spirit to do something.
- Do not dismantle the device without permit, please contact the dealer or our company if you have any problems.

## **PRODUCT OVERVIEW**

- 3.0" LTPS TFT high definition true color LCD Display, QVGA quality, 16:9 format, 320x240, 262K color.
- 2 Mega pixel digital camera; support of static photographs and dynamic video recording (DV).
- External miniSD card; enlarge the storage space, support 2GB flash memory.
- Record function: supports AV IN.
- Audio/video output: AV OUT (NTSC/PAL TV system).
- Support AVI (Divx, Xvid) and ASF (MPEG 4) formats with the playing effect up to 720x480, 30 frames/sec, DVD image quality achievable.
- Audio play function, support these audio formats such as MP3/WMA/WAV PCM/ADPCM
- FLASH 2.1 animation play support.
- Photo browse function, it's used to browse all kinds of digital photos such as JPEG (GIF, PNG, and BMP), supports EXIF2.1 JPEG format.
- Game function, thousands of NES simulator games from the Internet.
- E-Book function.
- Calendar, calculator, storage checking function; auto power off, time display.
- USB 2.0 port.
- FM radio (option).

## **PACKAGE CONTENTS**

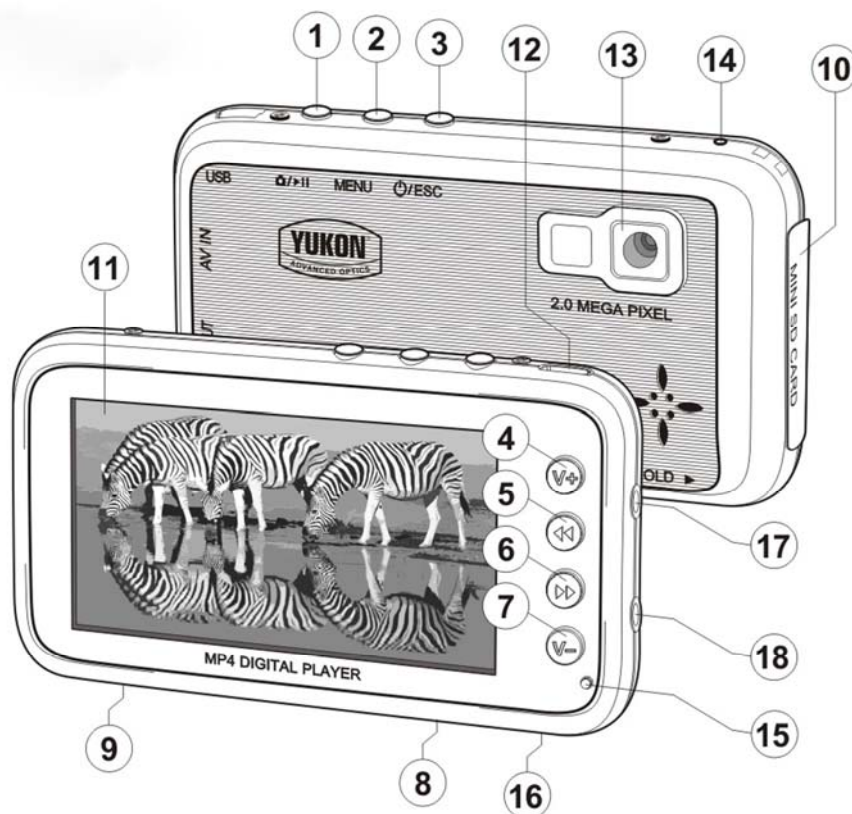
- Yukon Mobile Player/Recorder (MPR)
- Operating Instructions
- Device CD
- Earphones
- Charger
- USB cable
- AV cable
- Cable for the Ranger and Ranger Pro 5x42
- Carrying case

## CONFIGURATION REQUIREMENTS FOR PC

- Above Pentium 100MHz
- Operating systems of Windows 98/2000/ME/XP/Vista
- USB port
- CD-ROM
- Residual space more than 15MB
- EMS memory above 32MB

## CONTROLS DESCRIPTION

- **EXTERNAL APPEARANCE**



## CONTROLS

### 1. OK

Play/Pause/Camera/Video camera. Press OK to confirm.

### 2. Menu (M)

Menu Key. Use as submenu transfer key by long time press in play mode.

### 3. POWER/ESC

Long press to power ON/OFF; short press as EXIT key.

### 4. V+

UP key; play mode - volume increase; play mode - EQ switch (first press MENU until the volume scroll box turns blue); playing game - move of the object upward; cursor moving function.

### 5. LEFT

Left key; in play state - to play the previous track; in play state - to F.REV (first press MENU until the volume scroll box turns blue); playing game - move the object leftward; cursor moving function;

### 6. RIGHT

Right key; press the key to play the next track; in play state - F.FWD (first press MENU until the volume scroll box turns blue); playing game - move the object rightward; cursor moving function.

### 7. V-

DOWN key; in play state - volume increase; play mode - EQ switch; playing game - move the object downward; cursor moving function.

### 8. RESET

reset key. Press when the MPR does not work or works improperly.

### 9. HOLD

lock key.

### 10. Mini SD CARD

Mini SD card slot.

### 11. 3.0 inches 16:9 TFT screen

12. **USB port.**
13. **Digital CMOS Camera.**
14. **Built-in microphone.**
15. **Light indicator:** green light - working mode. Red light - power charging mode.
16. **Power Connect:** AC power connect
17. **AV IN port** (to connect Ranger/Ranger Pro 5x42)
18. **AV OUT port** (to connect earphones)

## OPERATING INSTRUCTIONS

### • Precautions Before Using

Battery level icon



Full



Half



Little



Used up, charge now

**NOTE:** if the battery is going to be used up, please charge it immediately to ensure normal operation!

**PROMPT:** if the Yukon MPR can not be turned on, probably the built-in battery is used up. Please charge it with the charger and then use it again.

### • Charge

#### Charging Method

Take out the charger from the packaging box, and connect one end of the charger to the 220V AC socket, and insert the other end into the charging port of the player. When the MPR is charging, the indicator at the bottom right corner of the panel turns red. After the charging process is finished the indicator goes off. This indicates the battery has been fully charged. To ensure the battery is fully charged, charge the MPR successively for 3-4 hours.

#### Precautions for Charging

- The charger can be used for this product only. It is allowed for indoor application only. Do not place it in a damp environment. When charging is finished, please pull out the charger and keep it appropriately. It is not allowed to repair, dismantle or modify the charger without permission.
- In order to get the best performance, charge the MPR for more than 12 hours at least for the first three times of charging, but not longer than 24 hours. The new battery shall exert its best performance after several charging-and-discharging cycles.
- If the MPR will not be used for a long time, it is advised to charge the battery once every 2-3 months and store the device after being charged fully.
- The device can not be charged via the USB port.

**PROMPT:** the MPR can be charged when the device is either on or off. The red indicator keeps on in during charging and it turns off after being charged fully. The device may be used after confirmation it is charged fully (the red indicator goes off).

**NOTE:** it is advised to charge the battery in the off state, as this will help keep the battery's life.

## BASIC OPERATION

### • Manual Power On

In the OFF state, long press the **Power** key for three seconds to power on the device. The screen will display the boot picture, and then enter the root interface of system.

**PROMPT:** you may long press **Power** key to power on the device no matter whether the **HOLD** key is locked or not before opening.

#### **NOTE:**

- If the player has a miniSD card inside, you may hear a sound for the screen might be wobbled when the system reads the card in opening. This indicates the system is ready for working.
- Before the system reads the card completely, do not make any operation to the device, or key pressing function might be affected.

### • Manual Power OFF

In any working state long press the **Power** key to power off the device (except when HOLD key is locked). The Power-OFF picture will be displayed and then the MPR will be powered off.

**NOTE:** the picture in powering on/off might be sometimes displayed incompletely. However this could be corrected after resetting the picture which is normal.

### • Auto Power OFF

The MPR automatically powers off in the following cases:

- All function modes are in the standby state;
- No operation is activated within 3 (or 15) minutes or in any state;
- The battery is used up.

**NOTE:** if the Auto OFF time is set to be NO, the function is not available.

### • RESET

If the player is frozen for misoperating or other reasons or the device works abnormally, please press the **Reset** key on the bottom edge of the device (use a thin sharp object like a ball pen or a paper clip to press). Then long press Power key to power it on once again, the MPR will be working normally.

### • HOLD lock key

If you want to watch or listen to the music for a long time, you may lock the keys by the **HOLD** key to avoid wrong operation. In any operating mode, you may move **HOLD** key to lock the keys. Please note that a lock icon prompt appears in the submenu or in the play mode (not in the main menu). Move the **HOLD** key back to unlock.

### • Indicator

A green indicator in the right lower corner of the panel indicates working state. The indicator turns red when the MPR enters the charging mode.

### • Direction key

In the menu operation you can use the four direction keys (hereinafter referred to be “Direction keys”) to move the cursor. **LEFT** and **RIGHT** keys in the play state - press to play the previous and next track, to **F.REV** and **F.FWD** (first press **MENU** until the volume scroll box turns blue).

**UP** and **DOWN** in the play mode press to increase/decrease volume; to switch EQ (first press **MENU** until the volume scroll box turns blue).

## DETAILED OPERATION

### Interface of the main menu

Prompt: you may select the corresponding operation according to the prompt on the screen or instructions at the bottom part of the screen.

### VIDEO PLAY

#### • Enter the video browse mode

Under the master interface of the system press the direction key to select video option. Then press OK key to confirm to enter the interface.

At the time press **UP/DOWN** key to select the video files, press **MENU** key to pop up the menu, the function list is described as follows:

Display mode	List
	Thumbnail
Loop mode	Current
	All
	Random
File protect	Lock
	Unlock
Del file	Current
	All
Resume	
Exit	

At that time press **UP/DOWN** key to select the option. A small arrow at the right side of the option means that the option has suboptions. Press **Right** key to enter the current option and press **OK** key to confirm and exit. If you want to continue to set up press **Left** key to return after selecting the suboption and conduct the setup of the next option.

*E.g.:* press direction key to select **Del. file** option, press **Right** key to select the submenu, **Delete Current** is to delete the selected file and **Delete All** is to delete all video files. Press **OK** to confirm.

#### PROMPT:

- In the main interface of the browse video mode first frame of the image of the current video file will be displayed. But if the first frame of the image is black then a black image will be displayed in the browse mode.
- For the files that the MPR can not play the system will give a prompt “**Unsupported file format**”. This means the MPR does not support the file to play or the file have been damaged (the same applies to the picture function).

#### • Play video file

In the main interface of the video browsing mode press direction key to select a video file to be played, press **OK** key to confirm. The keys operation at this time is as follows:

Press **Play** key to pause to play, further press to continue to play.

Press **Up/Down** key to play the previous/next track.

Press **Left/Right** key to **F.REV/F.FWD**.

Press **OK** key to switch the play mode. After the mode is switched press Up/Down key to adjust the volume. Press **Left/Right** to select the **EQ** mode.

Light press **ESC** key to stop playing and return to the main interface of the video browsing mode.

**NOTE:** large video files may be blocked when conducting the operation of **F.REV** or **F.FWD** which is normal.

• **Exit**

In the main interface of video browsing mode press **ESC** key to exit and return the main menu of the system.

Loop mode	Current
	All
	Random
File protect	Lock
	Unlock
Del file	Current
	All
EQ mode	Normal
	Classic
	Popular
	Bass
	Rock
Exit	

## MUSIC PLAY

• **Enter the Play Music mode**

In the main interface of the system, press direction key to select Play Music option and then press **OK** key to confirm to enter the main interface of music browsing mode. Press **MENU** key to pop up the setup menu:

The operating method is identical to that in the video play section.

• **Playing music file**

In the main interface of music browsing mode press **UP/DOWN** key to select the music file to be played, and press Play key or **OK** key to confirm to play.

**Controls:**

Press **Play** key to pause play, further press to continue to play.

Press **Up/Down** key to select the previous/next track.

Press **Left/Right** key\* to F.REV/F.FWD.

Press **OK** to switch the play mode; after the mode is switched, press **UP/DOWN** to adjust the volume.

Press **Up/Down**\* to select EQ mode; press **MENU** to switch the repeat mode.

*\*First press **MENU** until the volume scroll box turns blue.*

**Exit:**

Light press **ESC** key to stop playing and return to the main interface of the music browsing mode. Further press **ESC** key to return to the main menu of the system.

**PROMPT:** the MPR supports LRC lyric synchronous display and LRC V0.2 format. The corresponding lyrics in the play mode will be displayed only if the lyrics file has the same directory and its file name is consistent.

## PICTURE BROWSE

- **Enter the picture browsing mode**

In the main interface of the system, press direction key to select **Picture View**. Then press **OK** to confirm to enter the main interface, press **MENU** key to pop up the menu and set up the file:

Disp mode	Thumbnail
	List
	Slide
File protect	Lock
	Unlock
Del file	Current
	All
On menu	
Off menu	
Exit	

**NOTE:** the player supports JPEG (GIF, PNG and BMP), support EXIF2.1 JPEG format; If the player does not support the picture format to be browsed, you may use the attached CD to make conversion.

- **Opening Picture File**

In the root interface of picture browse mode, press Direction key to select the picture file to be opened. Press **OK** key to confirm and open the selected picture, the operation is as follows: press **UP** key to skip to the previous picture, press **DOWN** key to skip to the next picture, light press **ESC** key to return to the root interface.

- **Playing Slide**

In the main interface of the picture browse mode, enter the slide position of the display mode, press **OK** key to confirm to enter slide play. Further press **ESC** key to exit and return to the picture browse mode. Press light **ESC** to return to the main menu of the system.

**NOTE:** when setting up power-on picture and power-off picture as a background picture, the system needs 2-3 seconds to read the information to save the information. If you want to restore default setup, please enter the system setup and select default option.

## CAMERA MODE

- **Entering the shooting mode**

The MPR uses the LCD as a viewfinder. In the main interface of system, press direction key to select Camera option, then press **OK** to confirm entering the working shooting mode.

- **Shoot parameters setup**

Press **MENU** to pop up the setup menu of camera (the corresponding display is on the left side of the screen).

Seven options are available in total, and the first six options have submenus:

Mode	Single
	Continuous
	Self
Size	320*240
	640*480
	800*600
	1024*768
	1280*1024
	1600*1200
Quality	High
	Middle
	Low
Effect	Normal
	Negative
	SOLARIS
	Relief
	BINARIES
	SEPIA
	Black and white
Contrast	High
	Middle
	Low
Data label	Yes
	None
Exit	

The MPR has a 4x digital zoom function. Press **DOWN** key to increase the focus from 1.0, long press the key to increase the value quickly until to 4.0, at that time, the object on the screen shall be close, press **UP** key to make the reverse function. You may make adjustments to get the best effect in the actual operation.

Before shooting you may set up the desired saving routine. The memory media should be set up in **Memory management/Tool/Main Menu**. E.g. if miniSD is selected the memory media the photos shall be saved in the miniSD card. Please select the saving routine according to your memory card.

**PROMPT:** set FLASH/SD to be working zone in **Main Menu/ Tool/Memory management**.

**NOTE:** three shoot modes are available including single, multiple and auto shoot. The corresponding icon will be displayed at the top left corner. When it displays the clock icon the auto shoot mode is activated. The waiting time in auto shooting mode is nine seconds by default. When you press **PLAY** key it will take a photograph automatically after nine seconds. You may use the auto shoot function to take photos of yourself. For the multiple mode, it may take three photos successively after pressing **PLAY** key.

#### • Shoot

After setting up the related parameters hold the device with your hands and do not vibrate. Adjust the shooting gesture to obtain the best shooting angle and light press **PLAY** key to shoot the scene displayed on LCD.

• **Photo Browse**

Thousand of digital photos could be shot for the whole capacity. You may view the photos by pressing OK key after returning to the main menu and select the Picture submenu.

**DV CAMERA**

Enter DV View Taking Mode

Take the scene using the LCD. In the root interface of the system, press Direction key to select the Movie Shooting icon, and then press **OK** key to confirm and enter the movie shooting mode.

The working interface of recording video is identical to the shooting mode. Refer to the shooting section.

**NOTE:**

- Before pressing PLAY key, the camera should be in the View Taking state. Press PLAY start video recording, elapsed time will be displayed at the low right corner moves.
- The residual shooting time is estimated by the system, it can not be very exact. If you want to know the shooting time exactly, it may be estimated according to the proportion that 50MB-10MB EMS memory will be used by one-minute recording. When the EMS memory is full prompt “**No Space**” will be displayed at the top right corner. Shooting stops and the video shot is saved automatically.

**PROMPT:** the MPR uses little memory when shooting dark views and more memory will be used when shooting bright views or views with rich colors. That is why shooting time estimated by system may be inconsistent with the actual shooting time.

• **Parameters**

Press **MENU** key to pop up the setup menu of parameters. Functions showed as following:

Size	160*128
	320*240
	640*480
Format	ASF
	AVI
Quality	High
	Middle
	Low
Contrast	High
	Middle
	Low
Exit	

**PROMPT:**

- Refer to the introduction of camera for the parameter setup of video camera.
- Detailed specifications of the video camera can be found in the Specifications section of this manual. The defaulted video of this device is 320x240.

• **Enter DV Shooting Mode.**

After setting up the parameters, press **PLAY** key to start shooting. Elapsed time meter will appear at the low right corner. In the process of shooting you may adjust the focus and exposure degree or set up according to the actual requirements. The setup method is referred to the camera section. Light Press **ESC** key to save the recorded contents and return to the main menu.

**NOTE:** do not vibrate your hands in shooting. You may hold the device by two hands and move your body slowly to shoot the views and fix the device to shoot.

**PROMPT:** after entering DV shooting mode, the built-in loudspeaker starts recording of the voice/sound synchronously with the DV shooting. The voice record is subject to the solution of this device and the sound quality is not very good. It is recommended that you keep the built-in microphone as close as possible to the sound source.

#### • **Playing DV Movie**

If you want to play the recorded movie, press light **ESC** key to exit and return to the main menu, select Video Play option, press **OK** key to enter and press Direction key to select the movie. Further press **OK** key to play.

**NOTE:** please select the storage medium correctly. If you select the storage card as the storage medium in shooting you will not be able to find the recorded file in the EMS memory of the device.

### **RECORDING**

#### • **Microphone Recording**

Record the contents through the built-in microphone. Select Microphone Recording option. Press **OK** key to start recording, the screen displays **Start to Record** and start to time.

**PROMPT:** if the screen protection function is set up, the function will be activated during recording (same for Line-in recording operation), press **PLAY** key to stop recording and the recorded file will be saved automatically.

#### • **Line-in Recording**

Record the played audio file through connecting the player with PC or CD, DVD or TV audio device via the line-in line.

**PROMPT:** connect one end of the line to the MPR (AV IN port) and the other end to your PC or CD/DVD/TV device. After being connected and in the interface of REC mode select Line-in REC option, press **OK** key to confirm and start recording. The screen will display “Start to Record”. Press **OK** key to stop recording, the screen will display “Stop Recording” and the recorded file shall be saved automatically, light press **ESC** key to exit the REC mode.

### **GAME**

In the main interface, press the direction key to select the game, three games are available including block, boxer and game room.

#### **Block**

Select Block option, press **OK** key to confirm to enter the game interface and press Up/Down key to adjust the level. Press **OK** key to start to play the game. Operating method: in the game mode press the **UP** key to change the shape and press **LEFT/RIGHT** key to move leftward/rightward, press Down key to move fast, press **OK** key to pause to play the game; press **ESC** to exit the game.

#### **Boxer**

Select Boxer option and press **OK** key to enter the game interface; press **OK** key, when the red map icon is displayed at the lower right corner. Press direction key to select the map type, press **OK** key to confirm. Operating method - when it displays the yellow map type and steps at the lower right corner, press direction key to move the box to the designated position; press light **ESC** key to exit the game.

## Game Room

Select Game Room option and press **OK** key to enter the game interface; at that time press **MENU** key to pop up the game setup menu:

Play game	
File protection	Lock
	Unlock
File deletion	Delete one
	Delete all
Exit	

Press **UP/DOWN** key and press **OK** key to confirm. After entering the game list interface: press **UP/DOWN** key to select the game to be played and then press **OK** key to enter the game, press **OK** key to start the game.

### • Keys introduction:

combination of direction keys - move the object upward, downward, leftward/rightward; **MENU** - quick shot; press **OK** - Pause; Press **LEFT** key first, then press **OK** - Skip; **ESC** - exit the game menu.

## E-BOOK (TXT FORMAT)

- In the main interface of the system press direction keys to select Learn option and press **OK** key to confirm. Select E-book option and press **OK** to confirm. Press **UP/DOWN** key to move the cursor, press **OK** key to read. When in the browse mode is set to be manual, press **UP/DOWN** key to move the lines and press **LEFT/RIGHT** key to turn pages.

- In the list menu of the E-book press **MENU** to pop up the file setup system such as browse mode, file protection and file deletion. Set up manual or auto (time can be set up), press **ESC** to exit.

- Bookmark setup. After exiting E-Book the system will memorize the page automatically. When you enter the E-book again press **OK** key in the first page interface to display the page you read before exiting the book.

**NOTE:** E-book is located in :/EBOOK folder

## TOOLS

Press direction key to move the cursor to select Tool option and press **OK** key to confirm, light press **ESC** key to exit.

### Perpetual calendar

The left side displays the current solar calendar.

**NOTE:** you should enter Time Setup/System Setup to set up the calendar (until 2099).

### Calculator

Press direction key to move the cursor to select and press **OK** key to confirm.

### Notepad

It is equal to E-Book function, refer to E-book section.

## Memory management

This option displays status of the current memory. You may set up the working area and format the memory, press **OK** key to confirm. If the miniSD card is inserted before powering on, it might be set to be the current working area, at this moment it will display the capacity and the condition of miniSD card.

## Upgrade

Press **UP/DOWN** key to move the cursor to select USB/SD, if USB option is selected, press **OK** key to confirm. At this moment you may see a prompt “**CONNECTING TO PC...**” on the screen, please connect the player and PC using the USB cable, the system can be upgraded only when the MPR displays “**CONNECTING TO PC...**”, the system can not be upgraded if “**USB**” is displayed.

**NOTE:** there is no upgrading procedure inside the attached CD.

## SYSTEM SETUP

### Enter System Setup Mode

In the root interface of system, press Direction key to select System Setup icon, press **OK** key to confirm and enter the System Setup Mode. At the time press direction key to select the option to be set up, press **OK** key to enter.

### Language

The MPR support nine languages: English, French, Italian, Spanish, German, Dutch, Russian, Chinese and Czech. Press **UP/DOWN** key to move the cursor to select and press **OK** key to confirm.

### TV Output

It is used to select the screen of the MPR or the video file to broadcast to a TV set. TV PAL is progressive scanning TV system, TV NTSC is the standard TV system. The LCD screen of the MPR is used to play the video file. Press **UP/DOWN** key to select the option, press **ESC** key to cancel the setup.

**PROMPT:** if you want to use the TV set to play the video, please connect the MPR to the TV set in the power off state.

### NOTE:

- Do distinguish the audio and video cable color when using the AV cable. The yellow cable is usually the video cable and the red and white ones are the left and right audio cables.
- It is advised to open the MPR after the AV cable is connected. Since the AV IN ports of some TV sets are electrified, it may cause the MPR to power off or the TV may have no sound when inserting the AV cable.
- Every step of the MPR might be displayed on the screen of TV set. If there is no video signal do not select PAL or NTSC Set to output. If the screen of TV set has not color image please change the output system of the TV set, or change the receiving system.

### • Default Parameters (ex-factory setup)

Reset all setup parameters to be the setup state when leaving the factory.

At the time press **UP/DOWN** key to select whether to reset, press **ESC** key to cancel the setup. Press **OK** key to confirm and return to the root interface of system setup.

### • Sound setup

It is used to close or open the prompt sound of the built-in loudspeaker.

Press **UP/DOWN** key to select the ON or OFF option, and press **ESC** key to cancel the setup, press **OK** key to confirm and return to the root interface of the system setup.

**NOTE:** no matter the built-in loudspeaker is in ON or OFF state you can enjoy music after inserting the earphone. In the TV OUT mode please close the built-in loudspeaker to avoid consuming too much electricity, do not vibrate the TC screen.

• **Auto Power OFF**

In any working mode, adjust the waiting time from the latest key operation to Auto OFF. Select OFF option to make the function unavailable and your device will not be powered off automatically. Press **UP/DOWN** key to select, press **ESC** key to cancel the setup, press **OK** key to confirm and return to the root interface of system setup.

• **Power saving mode**

Screen protection means the MPR will enter the black screen mode automatically after the set time. The time parameter setup is to set the waiting time from the last key operation to the black screen mode in the play music mode. Select “**Never**” option to make the function unavailable. If it is set to be 0.5 minute then the MPR will enter the black screen mode if no key operation is activated within 0.5 minute in the play music mode, to enter the screen protection state to save the power.

• **Interface style**

Two interfaces are available - “Lovely” and “Pretty”, press **OK** key to confirm your choice.

• **Time Setup**

After entering the time setup mode press **LEFT/RIGHT** key to move the cursor and press **UP/DOWN** key to adjust the time. Press **ESC** key to cancel the operation. After setting up is finished, press **OK** key to confirm and return to the root interface of the system setup.

• **Volume**

Press **LEFT/RIGHT** key to decrease/increase the volume, press **OK** key to confirm and return to the main interface of the system.

**FLASH PLAYER**

In the interface of main menu, press direction key to select flash player, press **OK** key to confirm. After entering the operating interface, press **UP/DOWN** key to move the cursor and select the flash file to be played and then press **OK** key to play.

Before playing, press **MENU** key to enter the file setup menu, press **UP/DOWN** key to move the cursor to select Play Flash, File Protection or File Deletion. Operating method: press **OK** key to enter the submenu, press **UP/DOWN** key to move the cursor to select the option, light press **ESC** key to return to the main menu and press **OK** key to confirm and start to play.

**RECORD**

**Entering the recording mode**

In the interface of the main menu press direction key to select “**Video Rec**” icon, press **OK** key to enter the main interface of the recording mode. Before recording the video program please connect the MPR to the TV set or DVD. If there is no video signal input before recording the screen will be blue. If there is a video signal input it displays the active image (and audio).

In preview mode, press **MENU** key to enter the setup menu:

Size	320*240
	640*480
Format	ASF
	AVI
Exit	

In preview mode press OK key to start recording - at this moment it will display the time information at the lower right corner. Press **ESC** key to stop recording. Further press ESC key to return to the main interface.

**NOTE:** if the memory is full during the record the MPR automatically gives a prompt “Memory Full”, stops recording and returns to the main interface of recording mode, the record program will be saved automatically.

**PROMPT:** you can play a program recorder form the TV set. Remember to select the memory media before recording.

- **Recording with the digital night vision monoculars Ranger 5x42 and Ranger Pro 5x42.**

Connect one end of the cable to the **AV OUT** port of the Ranger (Ranger Pro), the other to the **AV IN** port of the MPR. Activate and adjust the Ranger using the manual. Turn on the MPR by holding the **POWER** key for three seconds, select “**Video Rec**” option, choose the video format and other settings, press **OK** to start recording. To avoid light exposure keep the MPR in its case attached to the Ranger body.

## **RADIO**

This function is optional, part of machines have not such function, please refer to the real products.

- **Entering the radio mode**

In the main interface of system, press direction key to select “**Radio**” icon, press **OK** key to confirm and enter the radio mode. Press **UP/DOWN** key to select the station.

Press **OK** key to enter the radio submenu, three menus are available including manual, auto, channel selection. Press **UP/DOWN** key to move among the menus.

- **Manual search:** select this menu, move **LEFT/RIGHT** key to make fine tuning of the selected station. Press **UP/DOWN** key to select the menu to save the station if one station is searched. Press **OK** key to confirm and save. If you want to save the next station press right key to skip over one station. If the current station is 01/20, you need to skip to 02/20. 20 stations are available. The previous station will be re-saved if all the stations are programmed.

- **Auto search:** select this menu, press **OK** key and the MPR starts search of the stations automatically, the station saving method is identical to that in the manual search mode.

- **Channel:** press **LEFT/RIGHT** to select.

## **PC COMMUNICATION**

- **Installation of U Disk Driver**

The device supports operating systems Windows2000 or above, it is unnecessary to install the driver for them. If the operating system is Windows98 or ME it is required to install WIN98 driver to use the U disk. Insert the attached CD into the CD-ROM of PC. Double click sp5kdriver.exe to install USB drive in ON state, connect the player with PC via USB cable. And at the time, the screen of PC shall display the interface of installing USB driver.

Click **Next** button and select “Search the latest driver (recommended)” in the pop-up dialog box, click **Next** button.

Mark the option of Designated Location and press **Browse** button.

Click the folder of Windows98SUB driver, then click **Confirm** button to enter the following interface.

Click **Next** button to display the Installing Confirming interface.

Click **Next** button to install the USB driver. After the installation is over restart your PC. Connect the MPR to the PC, double click **My Computer** on the desktop to view the icon of portable disk, it indicates the USB driver has been installed successively.

#### • PC Connection

**Connect the USB cable to PC.**

**WANRRNING:** please check the USB terminal before connecting the USB cable. Please insert the cable with proper power, or it may damage the product or PC.

**NOTE:** please use the attached USB cable or the MPR may refuse to work.

#### • Entering Working Mode of the U Disk

In the ON state (please charge the MPR if it can not be powered on) connect the MPR to PC via the USB cable, then enter the working state of the U disk. The LCD will display the sign of USB connection. The corresponding functions of the folders under the directory of the portable disk. Open the portable disk on the PC, five folders can be found including **DCIM, MP3, EBOOK, GAME and FLASH:**



**NOTE:** the MPR can not be connected with PC unless it is in ON state, or the portable disk can not be found. Please save files into the corresponding folder, otherwise, the player will not recognize them. When using the external expansion card, the system creates these folders automatically, the operation of storing the file must comply with the abovementioned rules, and then the player will be able to recognize files correctly.

#### • Application of External Expansion Card

The MPR supports external miniSD card. Insert the miniSD card into the card slot correctly and then it might be used.

#### **NOTE:**

- Please turn off the MPR before inserting the card. Insert the card firmly; when you hear a sound, it indicates the card has been inserted firmly. Then restart the MPR - you may use the external card. Before ejecting the card please turn off the device first, then push the card inward slightly, it will reject out a little, you may take it out.
- After the external card is inserted the MPR will automatically read the built-in memory NAND FLASH (not the external card) after being powered on. If you want the MPR to read the external miniSD card enter **Memory management/Tool/System main menu** manually to set miniSD to be work area option and press OK key to confirm.
- If it is required to read the built-in NAND FLASH enter **Memory management/Tool/System main menu** manually to set memory to be work area option and press OK key to confirm.

### • **Downloading/Uploading/Deleting Files**

After the MPR is connected to the PC, the PC will automatically recognize the MPR as a portable disk. If a miniSD card is inserted the PC will display two portable disks. If no external card is inserted, one of the portable disk can be used. The operation of the PC with the MPR is similar to that of the PC with its own HD and floppy disk.

The PC may copy, paste and delete all files inside the MPR (songs or other files). The operation of downloading/uploading means the copy/paste operation between the PC and player. You may copy files from the Internet or CD directly into the MPR, it is unnecessary to use the PC HD.

After the screen of MPR displays USB connection sign you may use it. When uploading/downloading the screen of MPR will give no prompt but the green indicator will blink - it indicates that data are being transferred, after the data are transferred, the indicator stops blinking and turns off.

#### **SPECIAL NOTE:**

Do not disconnect the USB cable when uploading or downloading, otherwise the software might be damaged and the MPR may refuse to work.

If you want to disconnect the MPR please confirm the operation of uploading/downloading is over.

If the operating system is WindowsME, Windows2000 or WindowsXP, uninstall the USB device first (Delete the Hardware Safely). Otherwise the MPR might be damaged and the data might be lost.

**STATEMENT:** abnormal operation such as accidental power breaking might cause data loss. Make backup of important to avoid data loss. The manufacturer is not be responsible for any loss of data arising therefrom.

### • **Format EMS Memory**

Connect the MPR to the PC using the USB cable. Select the icon of Portable Disk. Click the right key to pop up the menu and select Format option. Set up the file system to be FAT format in the pop-up dialog box and then click Start button.

Click **Confirm** button to start to format.

**NOTE:** please select the correct format before formatting, otherwise it might cause the malfunction of the MPR. Do not pull out the USB cable during the formatting process.

**PROMPT:** you may also use the attached formatting tool to format the built-in memory. The detailed operation can be conducted in **Main menu/Setup/Format**.

### • **Disconnecting the MPR.**

Confirm the operation of uploading/downloading file has been stopped. Click the icon "**Pull Out**" or "**Reject the Hardware (J)**" at the low right corner of the PC desktop.

Click the button of "**Pull Out or Reject the Hardware**" to pop up the dialog box of Delete Hardware Safely, and press Confirm button to pull out from PC.

## **APPLICATION OF PC SOFTWARE**

### **Installation of conversion software**

**NOTE:** 0.9.7.9 refer to the detailed description in the HELP of conversion software for the installation method and the conversion method of software.

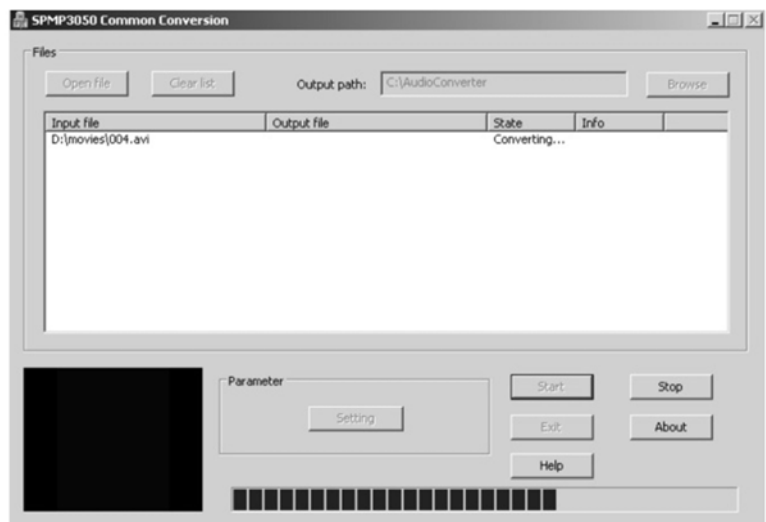
- Run the installation procedure of the video conversion tool, select the language and click **Next** button.
- Enter the installing interface, click **Next** button.
- Input your name and your company's name, click **Next** button. If you want to return to the previous step, please click **Last** button, click **Cancel** button if you want to cancel the installation.
- Select the installation routine (change the routine by Change button), click **Next** button. If you want to return to the previous step, please click **Last** button, click **Cancel** button if you want to cancel the installation.
- Click **Finish** button to exit the installation.
- After the installation is finished, the system will give a prompt to restart your PC. Please select **Yes** to restart the PC to finish the installation (the procedure might refuse to work if the PC is not restarted according to the requirement).

**NOTE:** the related plug-in might be popped up when installing, please install the plug-in first if any.

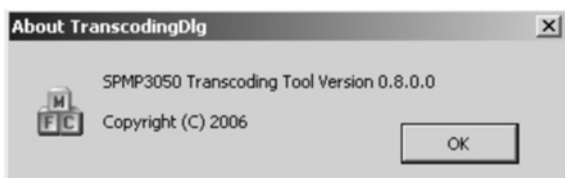
### • Operating method of conversion software

Run the procedure and the following interface shall be appeared: three conversion modes are almost same, now let's take the common conversion as an example to introduce the conversion method.

- The common video conversion interface appears after selecting the common conversion button:



Press About button and the following interface will pop up, click OK to exit.

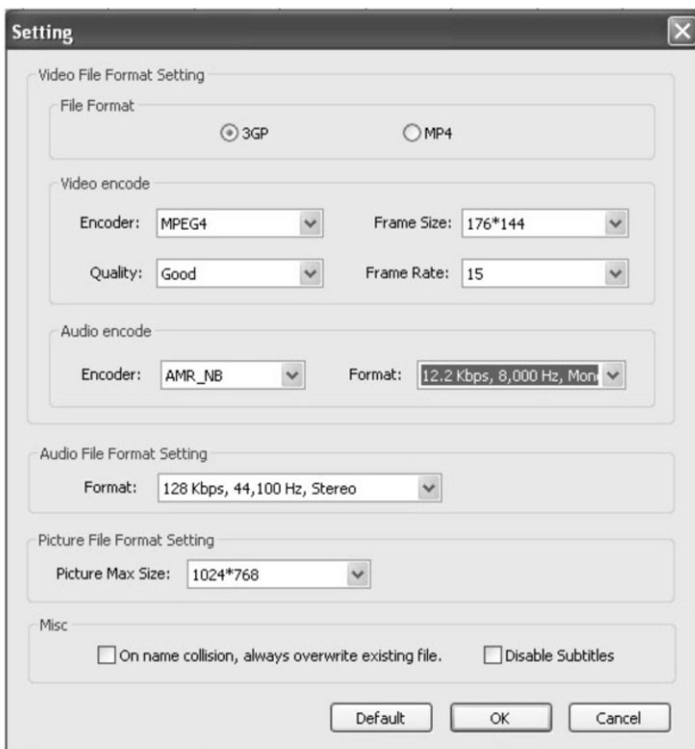
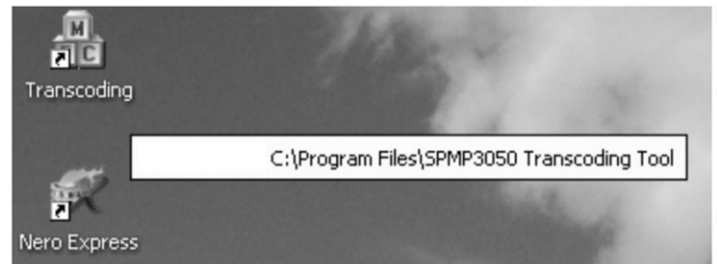


- Click **Open** button to select the file (multiple selections are available under one directory, it is also available under different directory). Click **Open** button to save the selected file and return. Click **Cancel** button to cancel the selection and return.
- The interface after selecting the input file is described as follows: the selected file and its routine are displayed in the list box under **INPUT FILE**.

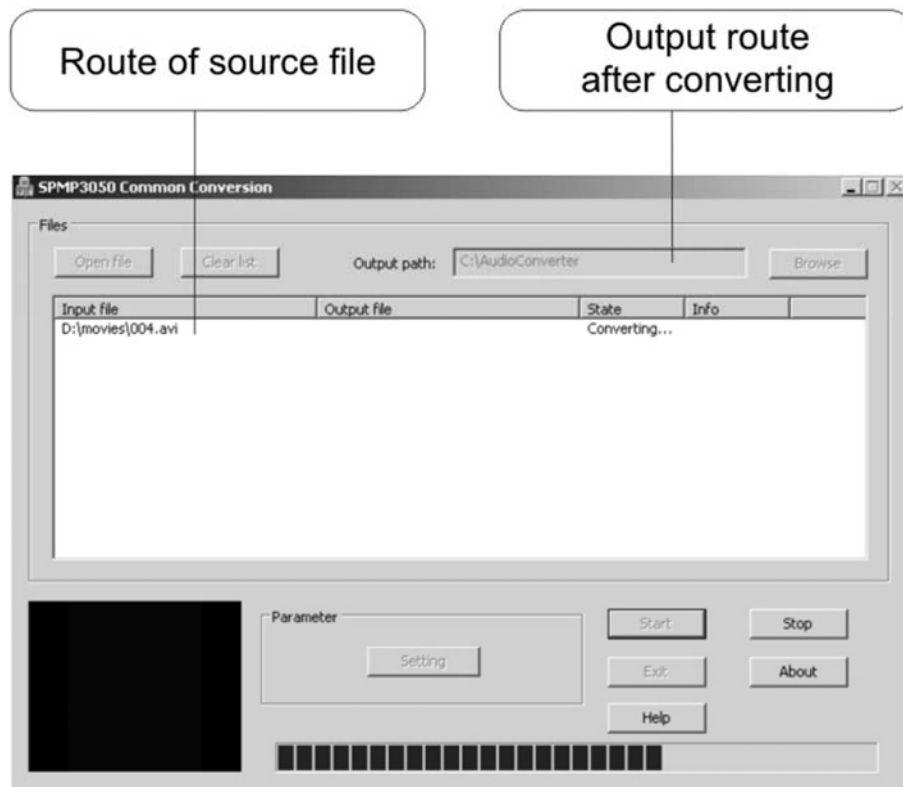
- Click **Browse** button to select the saving directory. After selecting the saving directory, click **OK** key to save the selected directory and return. Click **Cancel** button to cancel the selected directory and return.
- Interface after selecting the target file is described as follows: the directory of target file is displayed in the editing box of **OUTPUT FILE**.
- If you need to set up the parameters of the target file, click **Parameter Setup** button, the interface is as follows (please see next page):
- Interface after setting up the parameters.
- Click **Convert** button to start to convert the file.
- Finish. If it is required to convert again, please repeat the above steps.

### • **TranscodingVideo/Picture Converting Tool** **Convert Video file**

- The installing method of this tool is described in the instructions on the attached CD. Please open the installed Transcoding program, the operation is described as follows:
- Install the converting tool to your PC and the icon of **SUNPLUSMP TRANSCODING** will be displayed on the desktop of your PC.
- Put the VCD/DVD disks or the video file memorizer into the CD-ROM, double click the icon.
- Click the Setting button to set up conversion parameters.



- Click **Convert** button to start to convert the file, and the following picture will be displayed:



- After being converted, press Stop button to stop and press Exit button to exit the interface.

#### • Convert Picture File

The operation of converting picture file is similar to that of converting the video file. Except that you should select Image Mode in the first step.

Copy the converted file into the folder of **DCIM/100MEDIA** and then it may be played on the MPR.

#### • Convert the Music File Inside CD

You may also convert the music file inside CD into MP3 format by using the converting tool, refer to the operation of converting video file and finally save as MP3.

### TROUBLESHOOTING

Trouble	Possible Reasons	Solution
MPR can not be powered on.	The battery is used up.	Please charge the built-in lithium battery.
	It is frozen for misoperation.	Press Reset key and then long press Power key.
MPR powers off soon after being started.	Check whether the battery has enough electricity.	Please charge the built-in lithium battery.
The icon of the portable disk can not found after inserting the USB device.	Check whether the battery has enough electricity.	Please charge the built-in lithium battery.
	Check whether USB port is damaged.	Replace the USB cable.
	Check whether the BIOS is set up.	The right setup is: USB ENABLED.
	Check whether the mainboard of PC supports the USB port.	Please upgrade the driver of the mainboard.
	Check whether it's correctly inserted into the ports of PC	Please connect the USB cable correctly.

	and the player.	
	Check whether the PC is broken.	Restart your PC
No sound when playing.	The volume is too small.	Increase the volume.
	The audio output device is not set up correctly.	Enter main menu/setup/loudspeaker and select earphone or loudspeaker.
	The song file downloaded from Internet is not right.	Download the music files with standard MP3 format.
	The earphone is broken.	Replace the earphone.
	The system for formatting the memory is not correct.	Use FAT system to reformat.
Recorded file can not be saved.	The built-in memory is full.	Delete some useless files to release the space.
	The storage route is set up incorrectly.	Enter main menu/setup/storage selection to set up correctly.
The screen can not display the letters normally.	The language is set up incorrectly.	Select the correct language in the language setup and browse the website of the maker to check new firmware.
	The MPR does not support the language.	